

IIS VIA SILVESTRI, 301
sez. ass. L.S. M. Malpighi
sez. ass. I.T.C.G. Ceccherelli

ingresso A

1F, 2D, 2E, 3E,
4C, 5C, 5F
4C_{CEC.}, 5C_{CEC.}, 5E_{CEC.}

ingresso B

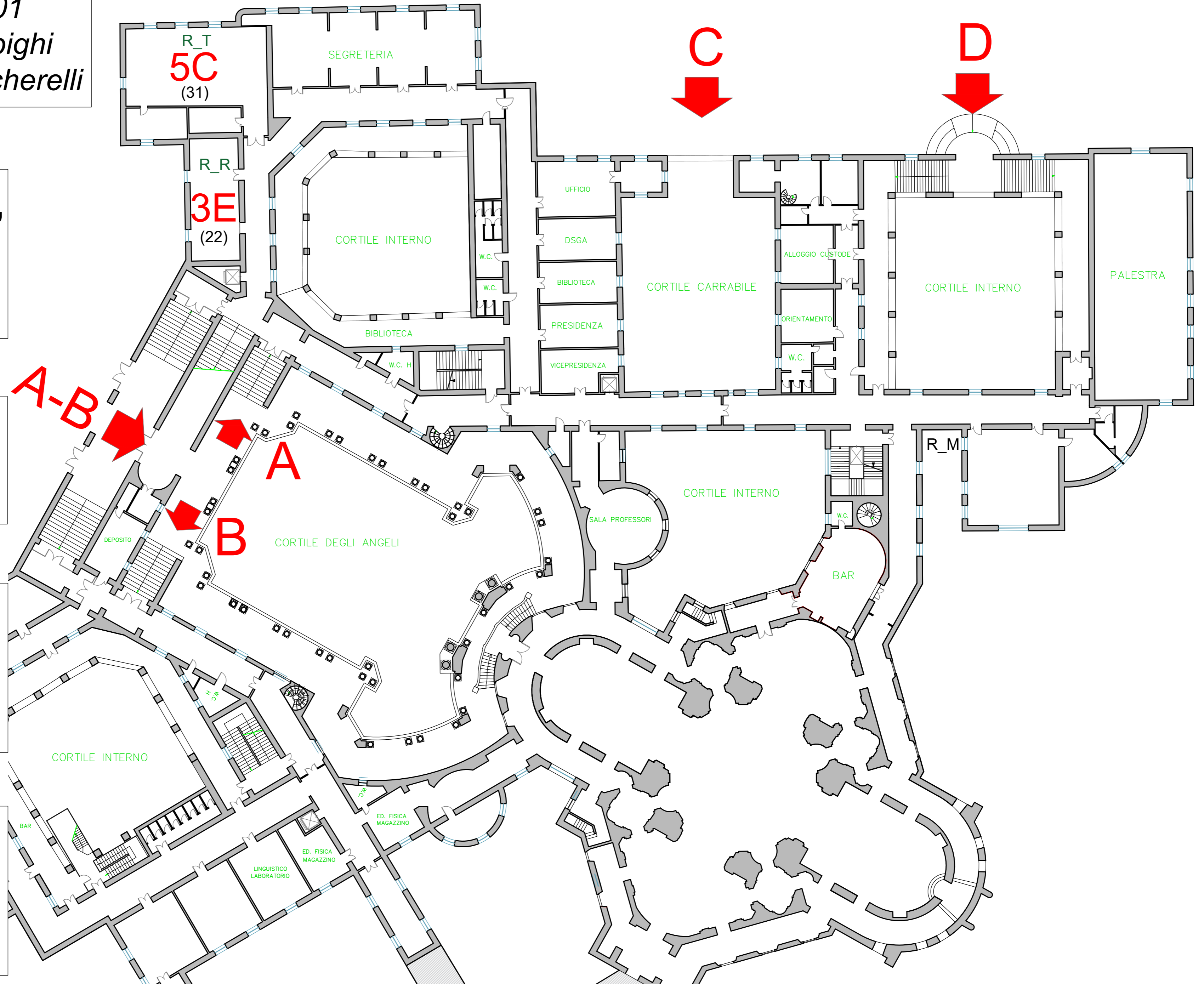
1E, 1G, 1H,
2F, 3F, 4B

ingresso C

1A, 1C, 1D
1I, 2A, 2B, 3A,
4A, 3D, 5D

ingresso D

1B, 1I, 2C, 3B,
3C, 4D, 4E, 4F
5A, 5E



PIANTA PIANO TERRA